

6 Finally, we need to feast – it's Christmas!

This gallery is full of crockery and table decorations used at feasts in years gone by.

Imagine you could choose any plate to eat your Christmas dinner off of?

Go to gallery 40 nearby on the same level



Wintry Challenge

Draw a picture of your chosen plate here:



Wintry Challenge

What would you love to eat for your Christmas dinner?

Write your ideal menu here:



My Christmas Menu:

Feeling cosy and festive, and hopefully not too hungry? **MISSION ACCOMPLISHED** – well done!



WINTER ADVENTURE TRAIL

SUITABLE FOR AGES 5+

YOUR MISSION:
Seek out Ashmolean objects that will make you feel cosy, festive and ready for a feast. Complete our wintry challenges along the way!

Checklist

- ☒ Warm clothes
- ☒ A wintry feeling
- ☒ Christmas stories
- ☒ Snow and ice
- ☒ Feasting equipment

1 First, it's time to get wrapped up warm for winter.

Can you find this toasty looking coat?



Go to the lower ground floor, gallery 5



This coat was made from Kashmir shawls from India for a fashionable Victorian lady, with space for her bustle skirt to poke out at the back!

Wintry Challenge

Pick out clothes fit for a winter adventure here in this gallery – how about a hat and some boots?

Draw them here:



2

Now for that wintry feeling.

Go up the main atrium stairs to level 2, and stop at the entrance to gallery 36 on your left

Wintry Challenge

This vase shows a wintry scene. Look closely and imagine stepping inside this chilly landscape. Think of 3 words to describe it:



Can you find this big blue and white Japanese vase?

This 'vase with winter landscape' was made by prize-winning Japanese potter Miyagawa Kōzan (Makuzu) in around 1910.



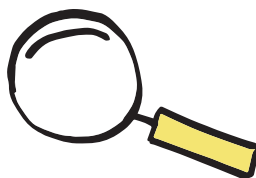
Go to gallery 42 on the same level

3

Time to think about Christmas stories.



Can you find this painting of St Nicholas by Bicci di Lorenzo (1433–35)?



Wintry Challenge

St Nicholas is also known by another name linked to Christmas. He is VERY generous, particularly on Christmas Eve. Can you draw his special hat?

Do you know his name?



4

Let's not forget the first Christmas story!

Find this painting of this mother and her baby by Italian artist Pietro Orioli (1458–96).

Wintry Challenge

There are lots of paintings of Mary and baby Jesus in this gallery, and next door in gallery 42. This is because this story is so important to so many people.

How many you can count?

Walk through to gallery 43



5

Now for that snow and ice!

Can you find a wintry painting very similar to this one, by the same artist Aert van der Neer (1645).

This Dutch artist liked to paint winter and moonlit landscapes. He must have liked the silvery, blue and white colours and the magical mood.

Move on to gallery 44 and turn right into gallery 45

Wintry Challenge

Can you spot one big difference between the snowy painting on this trail and the icy painting on the wall?

